

**Potomac River Sailing Association Spring and Fall Series**  
**SAILING INSTRUCTIONS**

**1. RULES**

1.1. The series will be governed by the rules as defined in the *Racing Rules of Sailing*.

**2. ENTRIES**

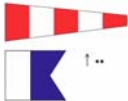
- 2.1. This series is open to members of the Potomac River Sailing Association; the skipper or boat owner must be a member of the association.
- 2.2. Competitors shall check in on shore, using the check-in sheet posted on the official notice board, up to 10:00 a.m. Sail numbers that are different than those registered with the association must be noted at check in.
- 2.3. A competitor failing to check in on shore shall check in on the water by: (1) presenting compliments to the race committee and (2) hailing skipper name and sail number.
- 2.4. Guests of members, prospective members, and members who are not paid-up, but who wish to skipper, must seek permission of the race committee on race day.

**3. NOTICES TO COMPETITORS & SIGNALS MADE ASHORE**

- 3.1. Notices to competitors will be posted at [www.potomacriversailing.org](http://www.potomacriversailing.org) and on the official notice board located near the middle small-boat crane. Any changes to these sailing instructions will be posted by 10:00 a.m. on the day it is to take effect.
- 3.2. Signals made ashore will be displayed by the official notice board. If a postponement is signaled ashore, the warning signal will be made not less one hour after AP is lowered.
- 3.3. The “L” flag (come within hail), flown before 9:45 a.m., signals a competitors’ meeting.

“L” flag → 

**4. SCHEDULE**

- 4.1. If it so desires, the race committee may hold a competitors’ meeting at 10:00 a.m. on a racing day, after signaling its intention per paragraph 3.3. With the exception of information permitted by Rule 41(d), all information presented by the race committee at the competitors’ meeting shall be posted on the notice board.
- 4.2. Races will be held on Sundays, as shown at [www.potomacriversailing.org](http://www.potomacriversailing.org).
- 4.3. The warning signal for the first race on each race day will be at 11:25 a.m. Subsequent races will be held as soon as possible after the end of the previous race. No warning signal will be made after 3:30 p.m. The Race Committee will try for at least three races each day. The signal that no further races will be started is AP over A. → 

**5. RACING AREA**

- 5.1. Races will be conducted on the Potomac River, between Gravelly Point and Hains Point, Washington, D.C. Following a notice to competitors, races may be conducted east of the Mirant Power Plant, Alexandria, Virginia.
- 5.2. Channel-bound vessels within the racing area are obstructions. Boats that are racing must keep clear of such vessels.

**6. CLASS FLAGS and STARTING ORDER**

6.1. The Race Committee will use class flags bearing these symbols:



**6.2. The start order is as shown in paragraph 6.1; absent classes are dropped. Classes with 5 or fewer boats may be started with another class, as shown on the course board, in the slot of the earlier fleet. After a general recall, the next warning signal will show whether the recalled fleet will restart immediately or go to the “back of the line.” This changes Rule 29.2.**

## **7. COURSES and MARKS**

**7.1. All marks will be orange balls, except that the race committee may substitute a cylinder with a red flag for the starting mark and a cylinder with a blue flag for the finish mark.**

**7.2. The attached course sheet explains the courses, the course designations, the course board, and the procedure for gates.**

## **8. STARTING AND FINISHING LINES**

**8.1. The starting and finishing lines will be between a blue flag on the signal boat and a nearby mark. If there are two nearby marks, the starting mark will be to the left of the signal boat when facing the windward mark and the finish mark will be to its right.**

## **9. TIME LIMIT**

**9.1. The time limit will be 90 minutes for the first boat to finish in each class. Boats finishing more than 30 minutes after the first boat that sails the course finishes will be scored DNF. This changes RRS 35.**

## **10. PENALTY SYSTEM**

**10.1. For catamarans, the penalty is one full turn (one tack and one jibe). This changes rules 44.1 and 44.2.**

**10.2. When a boat has a spinnaker drawing at the time of an infringement, drops it completely while taking her penalty, re-sets it, and has it drawing after the penalty, the penalty is one full turn (one tack and one jibe). This changes rules 44.1 and 44.2.**

## **11. PROTESTS**

**11.1. Protests shall be delivered to a member of the Race Committee within 60 minutes of the signal boat’s docking. The protest time limit and a list of protests received will be posted on the notice board. Hearings will be held as soon as possible after racing each day on the deck next to the Afterdeck Café.**

## **12. SCORING**

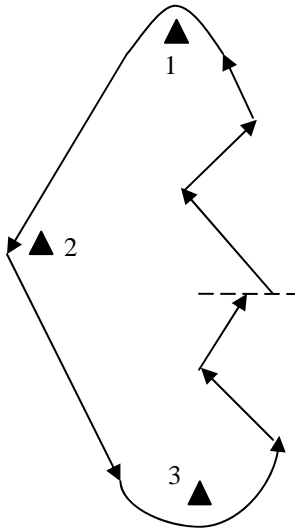
**12.1. The fleets shall score the series according to their chosen scoring systems. The race committee will post the individual race results as soon as possible following a race day at [www.potomacroversailing.org](http://www.potomacroversailing.org).**

## **13. TROPHIES**

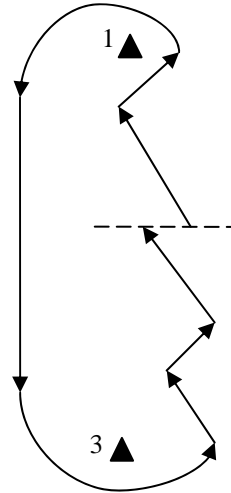
**13.1. Trophies will be awarded to in accordance with the Association’s awards policy.**

# COURSE SHEET

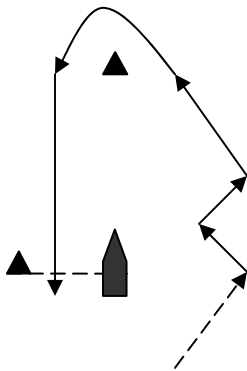
Courses consist of the following elements, with **all marks left to port**, except as noted:



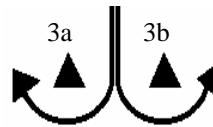
**Triangle lap** (Symbol:  $\Delta$ ). Sail a windward leg to the Mark 1 rounding; sail a reach leg to the Mark 2 rounding; sail a reach leg to the Mark 3 rounding (or gate), sail a windward leg to begin the next element, or sail to the windward finish line if sailing the final element.



**Windward/ Leeward Lap** (Symbol:  $\circ$ ). Sail a windward leg to the Mark 1 rounding; sail a leeward leg to the Mark 3 rounding (or gate); sail a windward leg to begin the next element, or finish sail to the windward finish line if sailing the final element.



**Extra windward rounding to a downwind finish** (Symbol:  $\cap$ ). After the last Mark 3 rounding (or gate), sail to Mark 1, round it, and then finish downwind. No other elements may follow.



**Leeward gate** (Symbol: "GATE"). Two marks substitute for Mark 3. Sail between Mark 3a and Mark 3b, from the direction of the previous mark, and then round either mark.

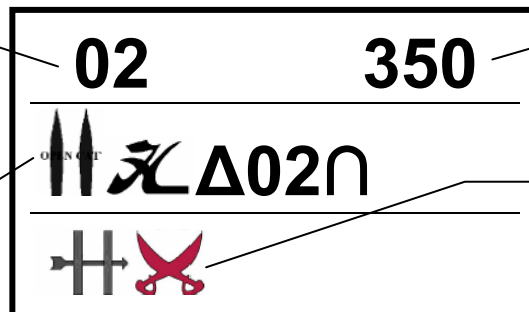
**All starts are to windward.** The start and/or finish line will usually be set near the middle of the windward leg, but may occasionally be set to leeward of Mark (or gate) 3(a&b). In that case, Mark 3, 3a, & 3b have no required sides immediately after the start or when boats are approaching the line to finish.

**Course designations** will be made using course symbols on a board displayed from the signal boat. When a numeral follows course symbols  $\Delta$  or  $\circ$ , it indicates the number of laps of that type to be sailed. Examples: **02**= "Start, Mk 1, Mk 3, Mk 1, Mk 3, [Upwind] Finish"; **02GATE** = "Same, but Mark 3 is a gate";  **$\Delta$ 02 $\cap$** = "Start, Mk 1, Mk 2, Mk 3, Mk 1, Mk 3, Mk 1, Mk 3, Mk 1, Downwind Finish."

**Course Board Details** (see the example board). The **course shown at the top of the board is to be sailed by all fleets**, except for those fleets with specific courses shown lower on the board. At its discretion, the **race committee may display the magnetic course** to the windward mark. When a **smaller fleet starts with another fleet**, the course board lists them next to each other and they start in the slot of the earlier fleet in the starting order (Sailing Instruction 6.1).

Most fleets sail 2 windward/leeward laps.

The Open Cats and the Hobie Cats sail a different course:  $\Delta$ 02 $\cap$ . They also start together



The magnetic course to the windward mark (optional).

Buccaneers start with the Hamptons (in the Hamptons' slot). S.I. 6.1. The course is **02**, the general course for all fleets.